



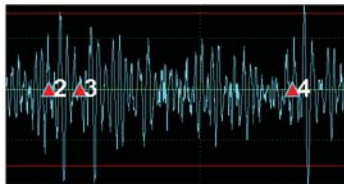
# rMetrix®

Ride Performance Assessment System

The rMetrix® system is the result of research initiated by the United States Federal Railroad Administration and dFuzion, Inc. It is in use across all 8 regions of FRA, state transportation departments, research institutes, and commercial rail carriers.



Real-Time GPS and Exception Plotting on GIS Shape Files



Real-Time Tri-Axial Accelerometer Graphs with Exception & Threshold Overlays

Ride Quality & Safety (FRA/Int'l Standards)

Vehicle - Track Interaction Studies

Ride Comfort & Health (ISO 2631)

Vehicle Qualification Testing

Proactive Track Maintenance & Verification

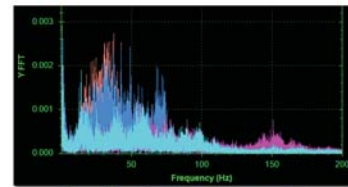
Time & Frequency Analysis

Custom Reports (With YOUR Logo)

GIS Rails, Stations, Mileposts, and More

Real-Time Data Graphs, Exceptions & Alerts

No Dedicated Test Car/Permanent Mountings



Fast Fourier Transform and Power Spectral Density Analysis

Location	
Distance t...	417.51 S of MP 20
Speed (m...	76.70
Latitude	47.326657
Longitude	-122.232420
Altitude (ft)	-82.02
Valid GPS...	True
Memo	
Broken Concrete Tie	
Confirmed 04/20/2010 14:52 PM	

Real-Time Exception Information with Custom Memo Field

To learn more or to get a free demonstration, contact us!

Web: [www.rMetrix.com](http://www.rMetrix.com)

Email: [rMetrix@dFuzion.com](mailto:rMetrix@dFuzion.com)

Phone: 703.946.8961